

EtQ Solutions™

Enterprise Quality & Environmental Management Out-of-the-Box... With Your Web Browser!

EtQ Solutions is a flexible software package that guides companies through compliance with ISO 9000, QS-9000, cGMP(FDA), ISO 14000 and similar standards for Quality and Environmental Management. Our web browser-based system for your intranet, extranet or the internet helps you through the full-life cycle of achieving and maintaining compliance. With EtQ Solutions, all the information related to compliance is easy to input, access, and report on.

Document Control, Corrective and Preventative Action, Calibration, Employee Training, NCMR, APQP, Audits & Surveys, Engineering Change and Web Charter (Reporting Tool) are just some of the dozens of processes EtQ Solutions streamlines and simplifies. EtQ Solutions lets you take full advantage of the familiarity that most of your users already have with a web browser by providing an interface with which they are already comfortable and productive. Since new features and functions are added at the centralized intranet or internet server, upgrade rollouts are seamless and pain-free to your line-of-business users, your help desk and your bottom line.

EtQ Solutions offer power and simplicity built on our "Flexible Workflow" and "Escalation Management" Engines. EtQ Office Integrator allows you to easily manage and integrate Microsoft Office® files with EtQ forms. With EtQ Solutions' Data Rollup and Web Charting features, gathering and presenting status and historical data from across your organization is fast and easy. And a new feature to EtQ Solutions, Incident alerts, automatically notifies specific individuals of recurring events that you define.



EtQ Office Integrator!

Seamless integration between EtQ forms
& Microsoft Office® files.

Process & Workflow Coordinated with EtQ

EtQ Solutions "Workflow Engine" ensures that information will move along the path you specify to the appropriate people until it's complete and approved. When an employee Barbara, for example, completes her "Corrective Action" form, EtQ Solutions will let William, the Quality Manager, know that there's a form ready for his review. William then forwards the form to a team for their action and is kept informed throughout the entire cycle.

EtQ Solutions' "Escalation Management Engine" will then act as a "deadline manager"

and ensure the team does what's needed to complete the Corrective Action process. If team members don't act within the specified time frame, EtQ Solutions lets William, as well as Barbara and others involved in the workflow - know that action is required before the process can move forward.

EtQ Solutions' Data Roll-Up merges your Quality and/or Environmental Management information into a single database, and EtQ Charter lets you present it in a Microsoft Excel spreadsheet.

No Other Quality & Environmental Management Compliance Software Offers These Features:

- Ready to use applications for ISO/QS-9000, cGMP and ISO 14000 compliance.
- The familiar & intuitive browser interface flattens the learning curve: Your users are immediately more comfortable & productive.
- FDA features ensure compliance with electronic signature and electronic records requirements, (21 CFR part 11).
- Out-of-the box, web browser-based forms and workflows can be used as-is or rapidly customized without programming.
- Incident Alerts: Automatic notification of recurring events that you define.
- Powerful analytical tool for easy reporting and charting of data.
- Automatic reminders and delegation ensures that work is on track.
- Centralized administration & upgrades eases system maintenance.

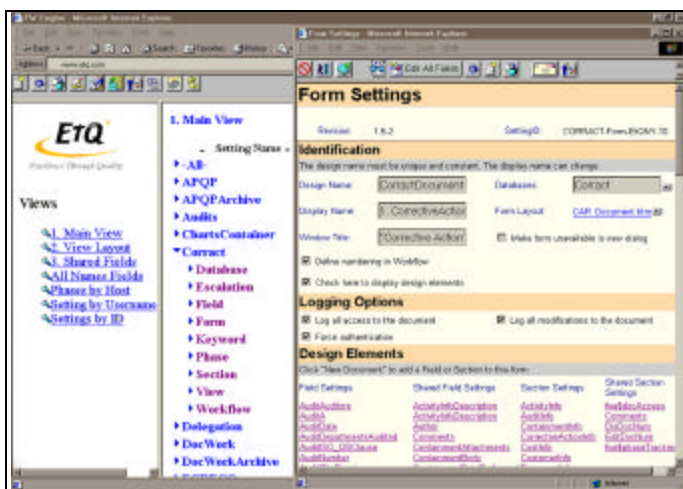
The Easiest (Out-of-the-Box), Most Configurable Web Browser-Based System for Intranets or the Internet

Configuration/Customization Made Simple

A primary benefit of EtQ Solutions centers on your organization's individual needs: Your needs are best served by a product that can easily be customized by your people and without programming. Upgrades will not corrupt these customizations. With EtQ, you control the way your system works.

With EtQ Solutions Flexible Workflow, your company can save more than 100% of the Cost of Ownership, over competitive applications, within the first three years. Studies show typical savings include 25% in up-front customization costs, 7.5% savings in upgrade costs and 5% savings in support costs.

The interface to EtQ Solutions is fully and simply customizable by your organization. You can easily add your company logo, color schemes and even form layouts (e.g. Style Sheets) to EtQ Solutions so it fits right into your existing intranet, internet or other web site. Changing the look and feel of EtQ Solutions is just the start of the customizations you can easily make, without programming.



Almost all common Quality Management workflow processes and forms are built into EtQ. The hundreds of forms and form elements that come out of the box with EtQ Solutions are modular, in that they can be used individually or combined into new forms. Your authorized users can take existing forms, or parts of

them, to customize the flow of information within your organization. The building of forms, workflows and applications is as simple as making choices from lists. All data and routing is focused on sharing information and taking action. Security and access control features are also embedded into

EtQ Solutions: You control who in your organization accesses what information - and this control can be at the server level, the database level, all the way down to controlling specific fields on specific forms.

User management and development of automated processes means you free up IT resources. The hassle-free back end and web browser front end mean additional support costs are almost non-existent.

System Requirements:

Client:
IE 5.0 (or better)
Computer/Processor: 486DX/66 MHz or higher processor

Client Operating System:
Windows 95, Windows 98,
Windows 2000 or Windows NT 4.0

Client Memory:
For Windows 95 and Windows 98:
32 MB of RAM min., 64 MB of RAM recommended
For Windows NT or Windows 2000: 64 MB of RAM min., 128 MB of RAM recommended

Server Operating System Requirements:
Domino R5 Supported Platforms:
Windows 2000, Windows NT4.0 (Intel), Windows NT4.0 (Alpha), OS/400, Linux (Intel) and Unix (HP UX, Sun Solaris, IBM AIX)

Server Memory requirements: (Depends on number of users. The following are min. requirements except where noted):
MS Windows 2000: Min. 512 MB, 1GB or more recommended,
MS Windows NT 4.0 (Intel, Alpha): Min. 512 MB, 1GB or more recommended
IBM OS/400 V4R2 or later: Min. 512 MB, 1GB or more recommended
Linux (Intel): Min. 512 MB, 1GB or more recommended

Disk Space:
4 GB (with a minimum of 2 GB free space)

Protocols:
TCP/IP on all platforms

MODULAR - EASY INTEGRATION WITH ALL PLATFORMS

EtQ Solutions is modular, so the pieces of the system can be used as stand-alone packages or as an integrated whole. Each module is designed to address a specific business need in accordance with GMP and/or ISO/QS-9000 standards.

The modular applications that make up EtQ Solutions sit atop IBM's powerful Domino web application server. A "stand-alone" Domino web application server snaps into your existing TCP/IP network without the need for additional infrastructure in your server or client environments.

EtQ Solutions allows easy integration with your existing systems. From Microsoft Office Documents /Exchange Mail Servers to your SQL servers and IIS servers. EtQ Solutions also works with your current operating system - whether your servers run Windows NT or 2000, Sun Solaris, Linux, OS/400 or any one of several others. EtQ Solutions snaps into your present environment and taps into your existing support structure and capabilities.

If your organization currently uses IBM Domino for mail or other applications, EtQ Solutions helps you keep growing with it. Every one of your current and future Domino applications can use EtQ Solutions' workflow. EtQ Solutions significantly cuts development time of future and existing workflow applications.

If you do not use Domino in your organization, EtQ can be used to automate business processes and integrate seamlessly with your data structures.

Join us for a Virtual Demo...



Call to Schedule an Appointment

EtQ
Excellence Through Quality

Contact EtQ Inc. at
800-354-4476 | 516-293-0949
info@etq.com